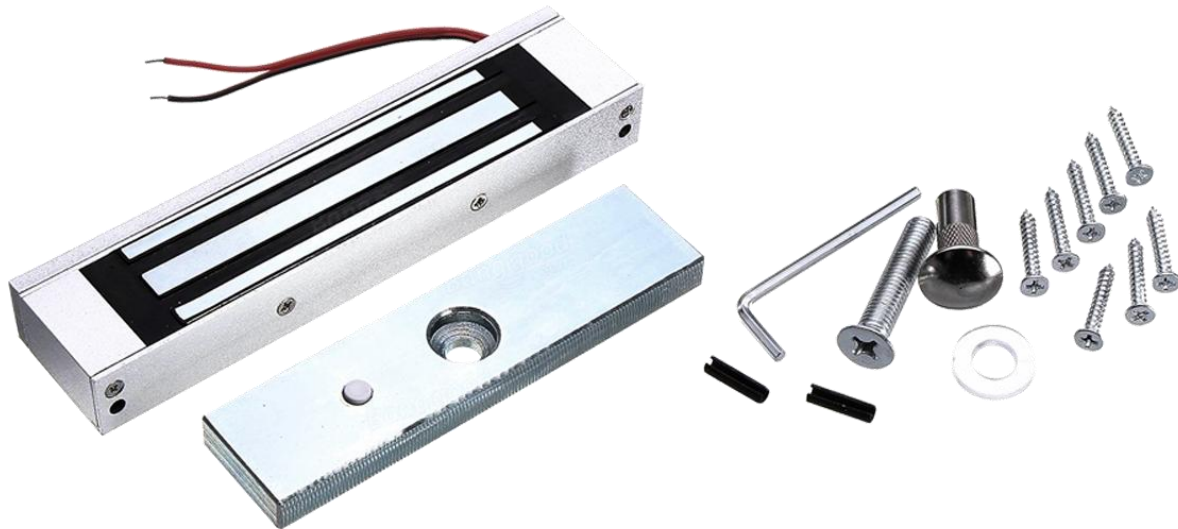


p.n. 560088

Outdoor magnetic lock 500kg NP-L500W 12/24V zol



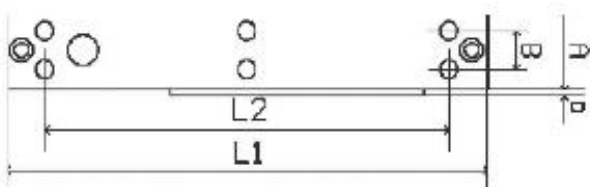
Instructions For Magnetic Locking Devices

*Technical Parameters

- A. Holding power: 500KGS
- B. Working Voltage: 12VDC
- C. Working Current: 320mA
- D. Safety mode: Power-on to lock, Power-off to open.
- E. Typical Installation: Flushing (A), Hanging (G)
- F. Append: LED (D), Time Delay Opening (X), For Feedback (F)

*Installation chart

Hanging Type Electromagnetic Lock

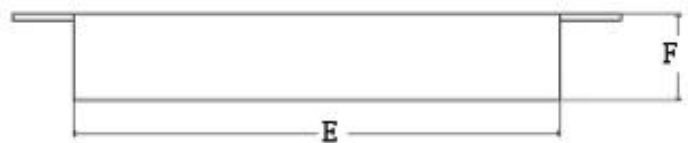
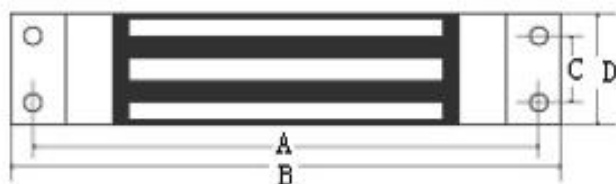


Electromagnetic Lock fitting for all kinds of doors



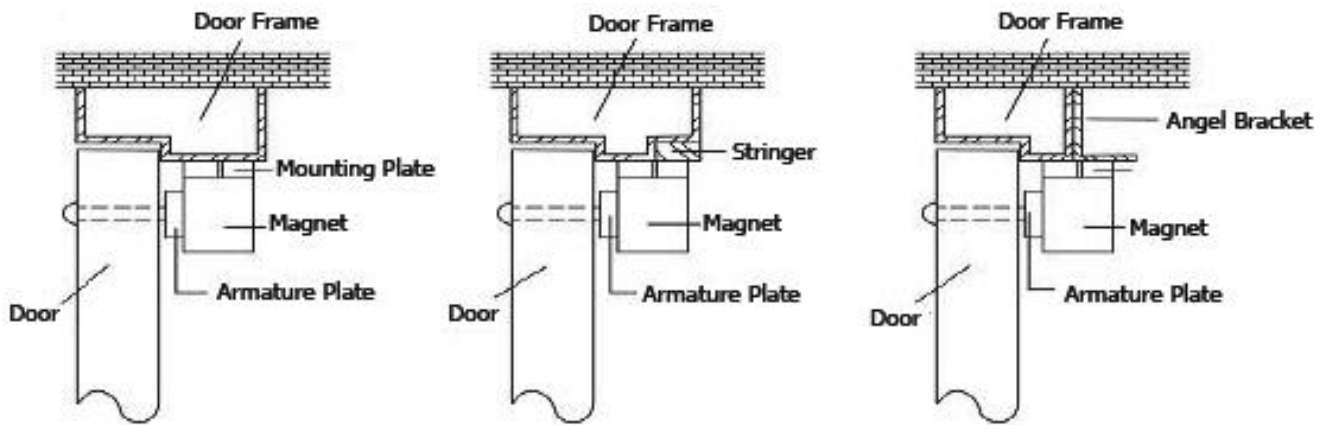
Model	L1	L2	A	B	D	E	F
500GF/X	-	-	-	-	-	6	67

Flush Bonding Type



All kinds of Flush Bonding Type Electromagnetic Lock

*** Typical Installation:**



STEP1

- A. Fold template along dotted line.
- B. Place template against door and head frame.
- C. Drill holes as indicated on temple.

STEP2

- A. Mount the armature plate to door using 1 rubber washer sandwiched between 2 steel washer (the rubber washer and 2 steel washer are installed on the through sex nut between the armature plate and door).

STEP3

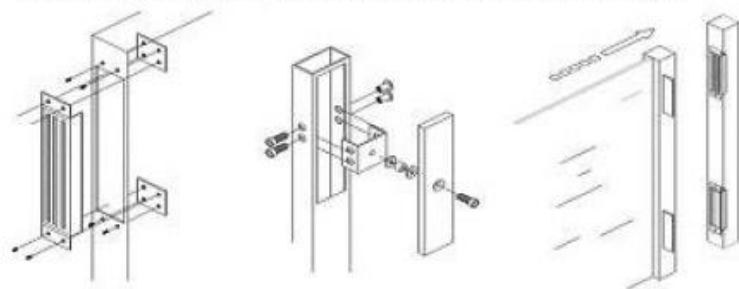
- A. Install the mounting plate with 2 flat head screws (the 2 M5X5 flat head screws are installed in the slotted holes for adjustment).
- B. Adjust mounting plate so that it forms right angle with the armature plate.
- C. Using the mounting plate as a temple, drill the wire hole.
- D. Drill and remaining mounting screws.

STEP4

- A. Install magnet to mounting plate with 2 M4 screws supplied.

Install Flush Bonding Type Electromagnetic Lock

*** Armature Plate Mounts To The Door:**



Install Magnet

Install Armature Plate

Important: Fix the armature plate not too tightly. and make the rubber washer more nexible, in order to make the armature plate automatically adjust its proper position with magnet.

*** 12VDC Input:**

- A. Connect the positive (+) lead from a 12VDC power source to line Red.
- B. Connect the ground (-) lead from a 12VDC power source to line Black.

*** Other installation:**

