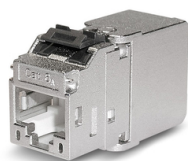


MS-C6_A 1/8 Cat.6_A (IEC) 180°-K (Keystone)

RJ45 module, shielded, Category 6_A (IEC)

for 10 Gigabit Ethernet



MS-C6_A 1/8 Cat.6_A (IEC) 180°-K (Keystone) RJ45 module and dust shutters

DESCRIPTION

For the transmission of digital and analogue voice, video and data signals.

The MS-C6A 1/8 Cat.6A (IEC) 180°-K (Keystone) RJ45 module is specified up to 500 MHz in accordance with the component standard IEC 60 603-7-51.

In combination with shielded Category 6A, 7 and 7A data cables all applications up to Class EA are applicable, that is including 10GBase-T (IEEE 802.3an).

Useable for PoE, PoE+ and 4PPoE application. Compact two-piece module, re-usable zinc die casting housing.

Special construction for high packing density in faceplates/outlets (up to 3 modules).

Tool-less, time-saving wire termination.

Possibility to terminate solid and flexible cables.

Outstanding electrical performance for 10-gigabit Ethernet applications.

360° braid connection to the strain relief bar.

Strain relief via snap-in clip without cable tie.

MECHANICAL PROPERTIES

Wire connection	IDC insulation displacement connectors
Solid copper wire	AWG 26/1 to AWG 22/1 (0.65 mm)
Stranded copper wire	AWG 26/7 to AWG 22/7, e.g. CU 7702 flex
Re-connection	feasible when using the same or bigger wire diameter
Diameter over insulation	0.7 mm to 1.4 mm (1.6 mm)
Temperature range	storing: - 40° C up to + 70° C
	during installation: - 10° C up to + 60° C
	in operation: - 20° C up to + 60° C

GENERAL PROPERTIES

Termination	Configuration in accordance with TIA 568-A and B, clearly marked with a colour code
Potential balancing	2.8 mm flat plug connection capability at the module
Mounting possibilities	Suitable for Keystone patch panels and Keystone faceplates/outlets

STANDARDS

Cat./Class	Cat.6 _A / Class E _A
Standards	IEC 60603-7-51 (Cat.6 _A shielded, 500 MHz) ISO/IEC 11801:2002 / Amd.2:2010 EN 50173-1:2011 TIA/EIA 568-B.2-10:2008

VERSIONS

Article No.	Product	Colour	PU
309249	Module MS-C6 _A 1/8 Cat.6 _A (IEC) 180°-K (Keystone)	silver	10 pcs.
309239	Module MS-C6 _A 1/8 Cat.6 _A (IEC) 180°-K (Keystone)	silver	100 pcs.